



REGISTRATION STATISTICS 2006/07

The following tables and graphs set out registration statistics for the financial year 2006/07 for the Pesticides Program.

Tables

The 25 application categories are aggregated into statutory* timeframe periods.

Preliminary assessment

Preliminary assessment is the correct legal term for what is more commonly known as 'screening'.

This table shows:

- applications in process from the previous year;
- applications received in 2006/07; and
- applications withdrawn or rejected during the screening process.

Outcome of application

This table shows the number of applications received for assessment and the number finalised during 2006/07.

Summary (Determination all applications)

This table shows a summary of all applications, at screening and evaluation, finalised during 2006/07. The table includes the average clock ON time (the time the APVMA has been evaluating the application) and the average elapsed time (the total time to finalise the application, i.e. time the APVMA evaluates the application, plus the time taken by the applicant to correct defects and supply the label for approval).

Graphs

The graphs are divided into timeframe periods for application categories. Each graph shows the number of applications that were finalised within 20% to 120% of the application statutory timeframe.

Note that if an application has been withdrawn during screening or is a modular application without a timeframe it will be counted in the 2 to 3 month application graph.

* The statutory timeframe for each application category is defined in Schedule 6 of the *Agricultural and Veterinary Chemicals Code Regulations 1995*.

Annual statistics for applications received and finalised Financial year 2006/07

Pesticide Program

PRELIMINARY ASSESSMENT				
In process at start of year				
Apps received				
Withdrawn				
Rejected				
Class of application				
Modular (modules to be assigned) or TBA		53	18	
2 to 3 month		1221	64	
5 month		164	7	
6 to 8 month		96	1	
9 to 12 month		0	1	
13 to 15 month		16	2	
TOTALS:	1,019	1550	93	0

2 to 3 month = Cat 7, 8, 9, 12, 13, 14 Cat 10 can be 5-15 months, most commonly 6-8 months
 5 month = Cat 5, 6, 10, 14, 17, 18 Cat 14 can be 2-14 months, most commonly 5-7 months
 6 to 8 month = Cat 10,11, 14, 16
 9 to 12 month = Cat 10, 14, 15
 13 to 15 month = Cat 1, 10

Withdrawn = treated as withdrawn by the APVMA, or voluntary withdrawal by the applicant

OUTCOME OF APPLICATION									
Granted									
In timeframe									
% in timeframe									
Refused									
In timeframe									
% in timeframe									
Withdrawn									
In timeframe									
% in timeframe									
Class of application									
Modular (modules to be assigned) or TBA	5	5	100%	0	0	-	0	0	-
2 to 3 month	995	959	96%	0	0	-	11	11	100%
5 month	153	96	63%	0	0	-	7	7	100%
6 to 8 month	80	47	59%	0	0	-	4	3	75%
9 to 12 month	1	0	0%	0	0	-	1	1	100%
13 to 15 month	12	9	75%	0	0	-	0	0	-
TOTALS:	1246	1116	90%	0	0	-	23	22	96%

SUMMARY (Determination all applications)				
Total finalised				
Number in timeframe				
% in timeframe				
Av. clock On (months)				
Av. elapsed time (months)				
In process at end of year				
	23	23	100%	0.0
	1070	1034	97%	1.2
	167	110	66%	5.1
	85	51	60%	8.3
	3	2	67%	12.6
	14	11	79%	10.1
TOTALS:	1362	1231	90%	1,206

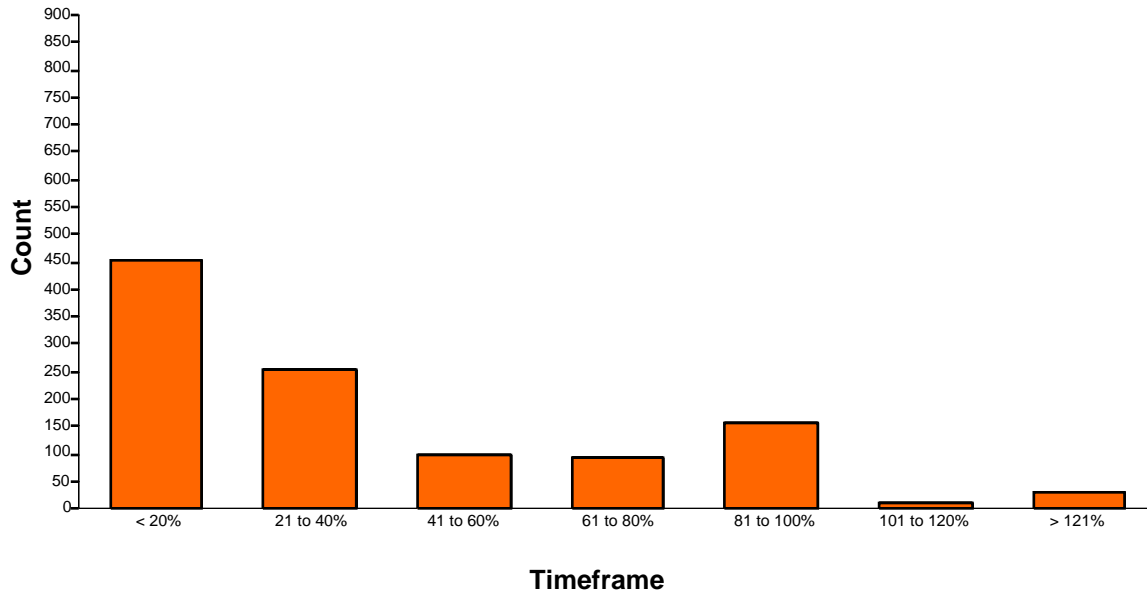
Australian Pesticides and Veterinary Medicines Authority

Finalised agricultural product applications

For the period: 01 Jul 2006 to 30 Jun 2007

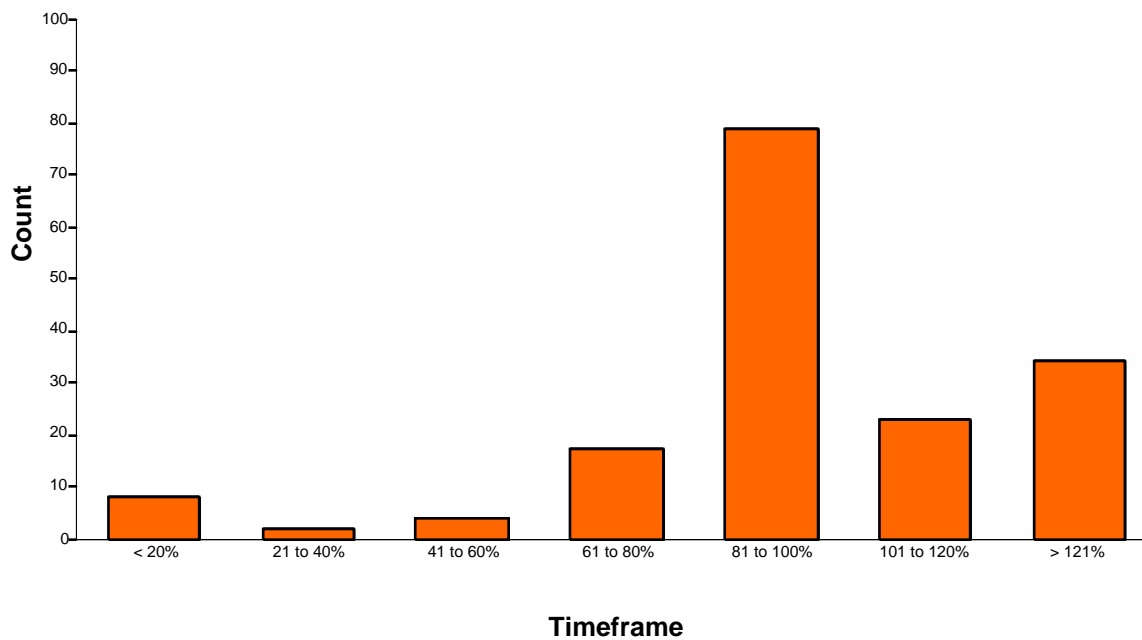
2 to 3 month applications

Total finalised: 1,093



5 month applications

Total finalised: 167



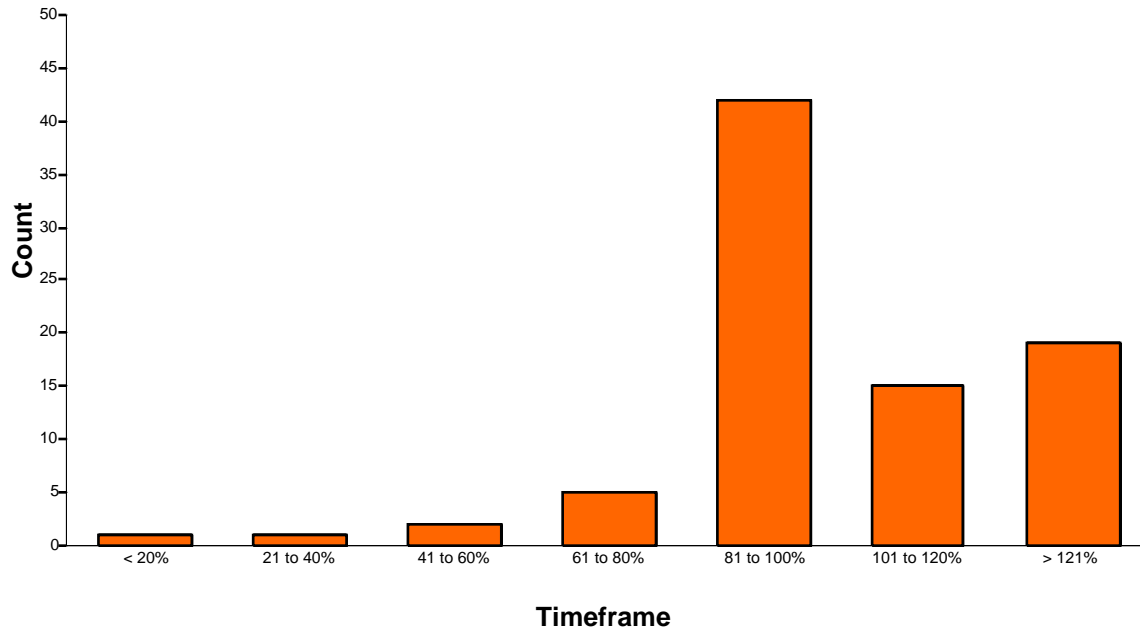
Australian Pesticides and Veterinary Medicines Authority

Finalised agricultural product applications

For the period: 01 Jul 2006 to 30 Jun 2007

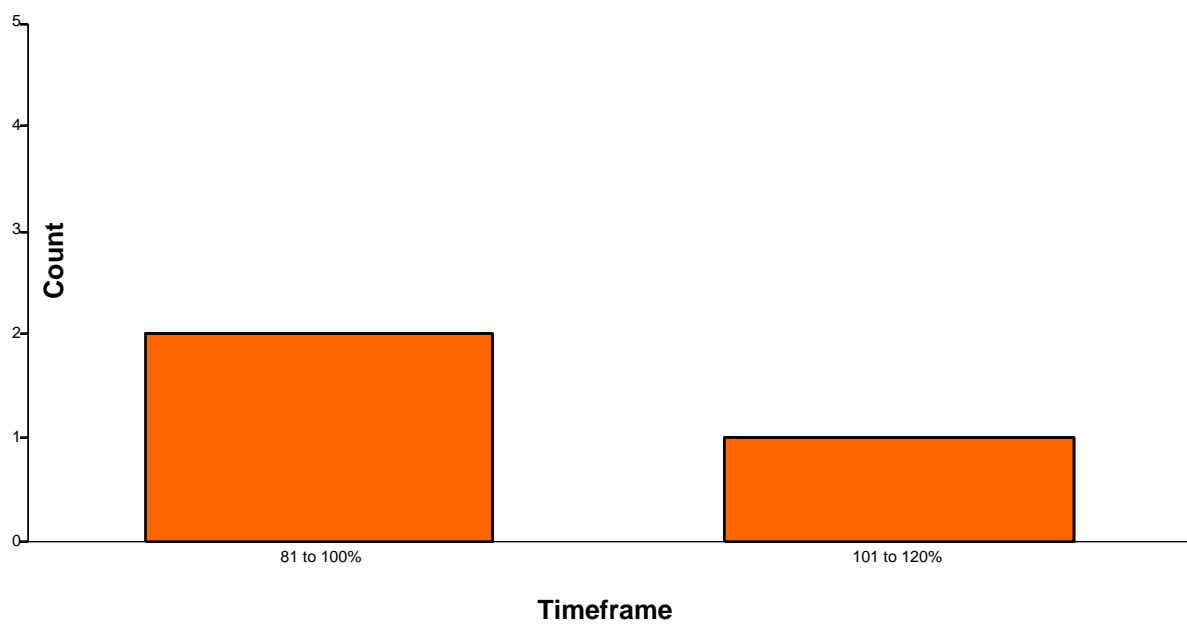
6 to 8 month applications

Total finalised: 85



9 to 12 month applications

Total finalised: 3



Australian Pesticides and Veterinary Medicines Authority

Finalised agricultural product applications

For the period: 01 Jul 2006 to 30 Jun 2007

13 to 15 month applications

Total finalised: 14

