



## **REGISTRATION STATISTICS 2008/09**

The following tables and graphs set out registration statistics for the financial year 2008/09 for the Pesticides Program.

### **Tables**

The 25 application categories are aggregated into statutory\* timeframe periods.

#### *Preliminary assessment*

Preliminary assessment is the correct legal term for what is more commonly known as 'screening'.

This table shows:

- applications in process from the previous year;
- applications received in 2008/09; and
- applications withdrawn or rejected during the screening process.

#### *Outcome of application*

This table shows the number of applications received for assessment and the number finalised during 2008/09.

#### *Summary (Determination all applications)*

This table shows a summary of all applications, at screening and evaluation, finalised during 2008/09. The table includes the average clock ON time (the time the APVMA has been evaluating the application) and the average elapsed time (the total time to finalise the application, i.e. time the APVMA evaluates the application, plus the time taken by the applicant to correct defects and supply the label for approval).

### **Graphs**

The graphs are divided into timeframe periods for application categories. Each graph shows the number of applications that were finalised within 20% to 120% of the application statutory timeframe.

Note that if an application has been withdrawn during screening or is a modular application without a timeframe it will be counted in the 2 to 3 month application graph.

\* The statutory timeframe for each application category is defined in Schedule 6 of the *Agricultural and Veterinary Chemicals Code Regulations 1995*.

## Annual statistics for applications received and finalised Financial year 2008/09

# Pesticides Program

PRELIMINARY ASSESSMENT				
	In process at start of year	Apps received	Withdrawn	Rejected
<b>Class of application</b>				
Modular (modules to be assigned) or TBA		79	14	
2 to 3 month		1281	191	
5 month		135	31	
6 to 8 month		78	2	
9 to 12 month		3	5	
13 to 15 month		7	2	
<b>TOTALS:</b>	<b>1,149</b>	<b>1583</b>	<b>245</b>	<b>0</b>

2 to 3 month = Cat 7, 8, 9, 12, 13, 14  
 5 month = Cat 5, 6, 10, 14, 17, 18  
 6 to 8 month = Cat 10, 11, 14, 16  
 9 to 12 month = Cat 10, 14, 15  
 13 to 15 month = Cat 1, 10

Cat 10 can be 5-15 months, most commonly 6-8 months  
 Cat 14 can be 2-14 months, most commonly 5-7 months

Withdrawn = treated as withdrawn by the APVMA, or voluntary withdrawal by the applicant

OUTCOME OF APPLICATION									
	Granted	In timeframe	% in timeframe	Refused	In timeframe	% in timeframe	Withdrawn	In timeframe	% in timeframe
<b>Class of application</b>									
Modular (modules to be assigned) or TBA	2	2	100%	-	-	-	-	-	-
2 to 3 month	1029	977	95%	-	-	-	14	11	79%
5 month	126	42	33%	-	-	-	9	6	67%
6 to 8 month	42	18	43%	-	-	-	4	1	25%
9 to 12 month	29	13	45%	-	-	-	3	1	33%
13 to 15 month	9	3	33%	-	-	-	1	0	0%
<b>TOTALS:</b>	<b>1237</b>	<b>1055</b>	<b>85%</b>	<b>0</b>	<b>0</b>	<b>-</b>	<b>31</b>	<b>19</b>	<b>61%</b>

SUMMARY (Determination period)						
	TOTAL finalised	Number in timeframe	% in timeframe	Av. clock On (months)	Av. elapsed time (months)	In process at end of year
	2	2	100%	0.0	5.6	
	1043	988	95%	1.3	5.5	
	135	48	36%	6.9	16.2	
	46	19	41%	8.2	16.1	
	32	14	44%	10.8	22.2	
	10	3	30%	18.0	41.5	
<b>TOTALS:</b>	<b>1268</b>	<b>1074</b>	<b>84.7%</b>			<b>1,219</b>

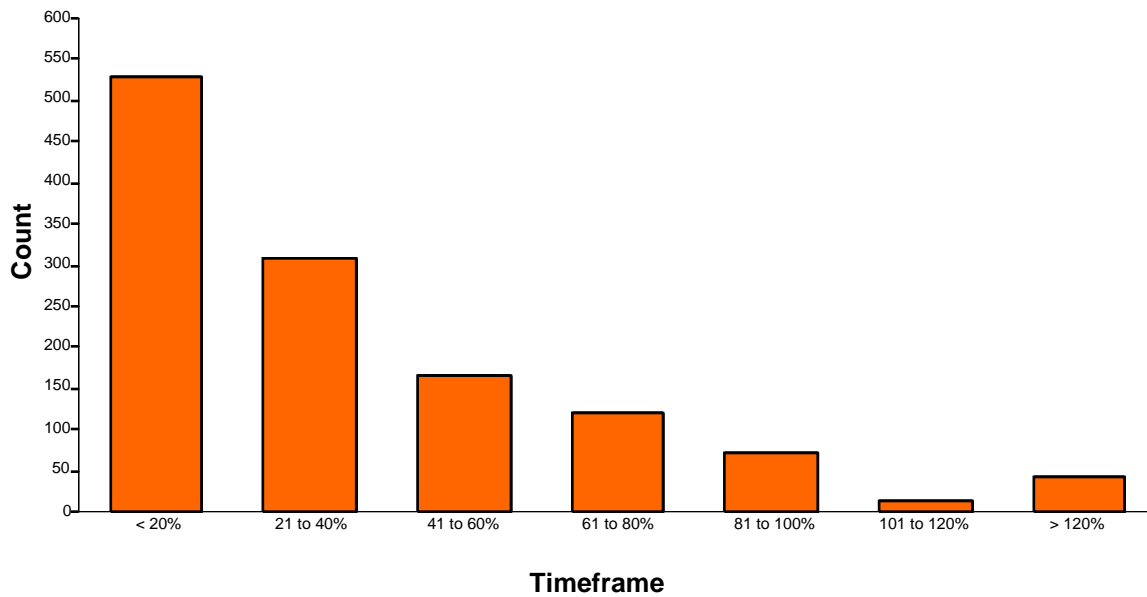


## Finalised agricultural product applications

For the period: 01 Jul 2008 to 30 Jun 2009

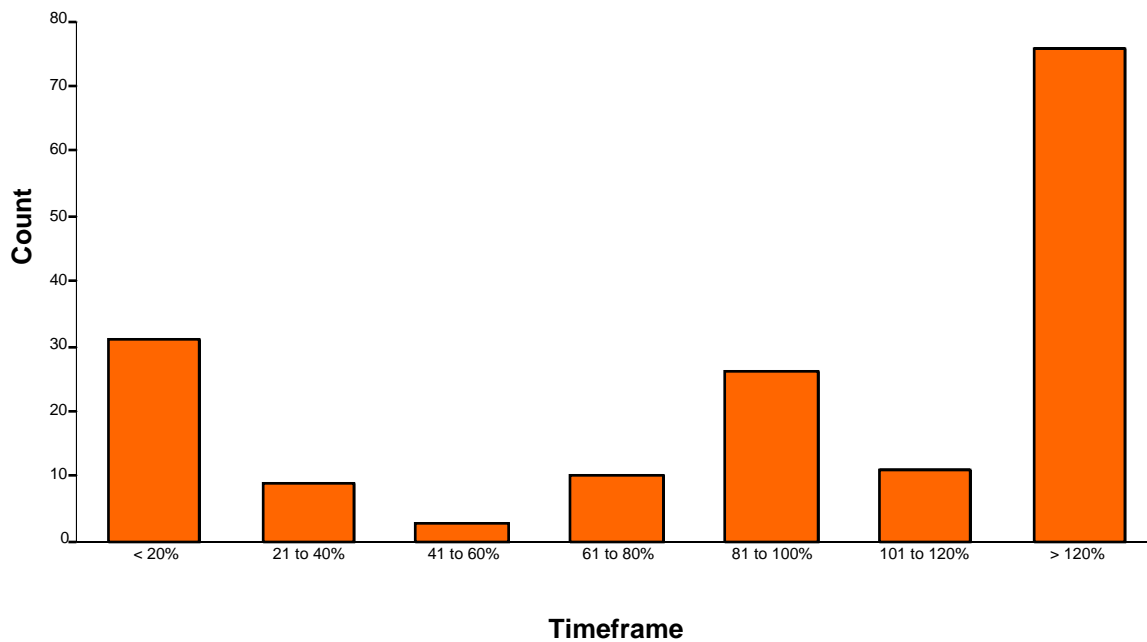
### 2 to 3 month applications

Total finalised: 1,250



### 5 month applications

Total finalised: 166



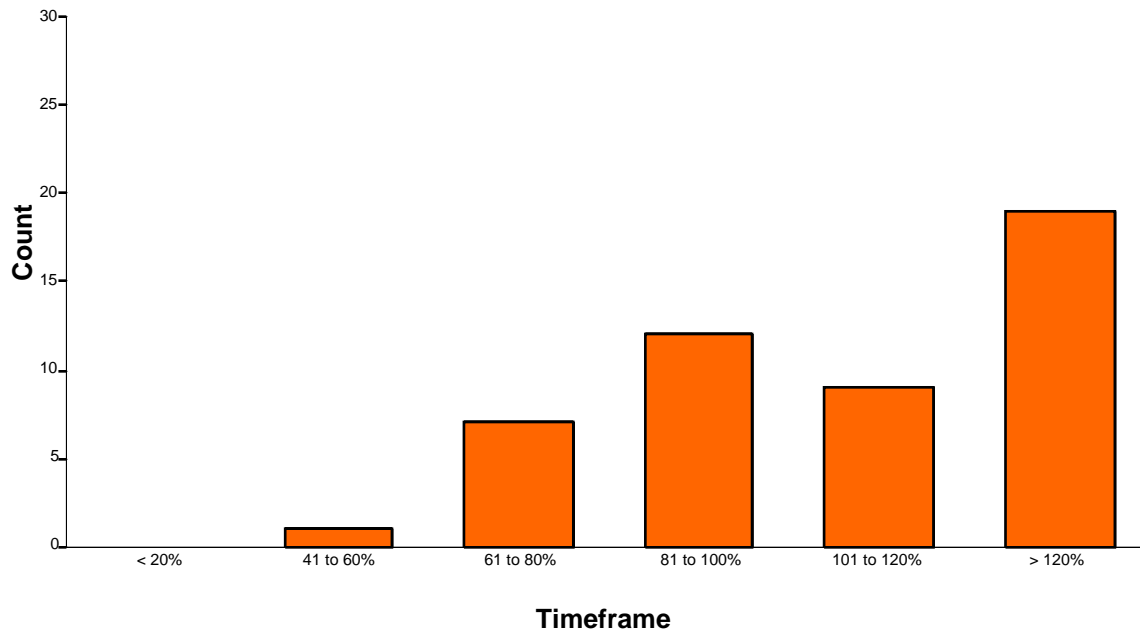


## Finalised agricultural product applications

For the period: 01 Jul 2008 to 30 Jun 2009

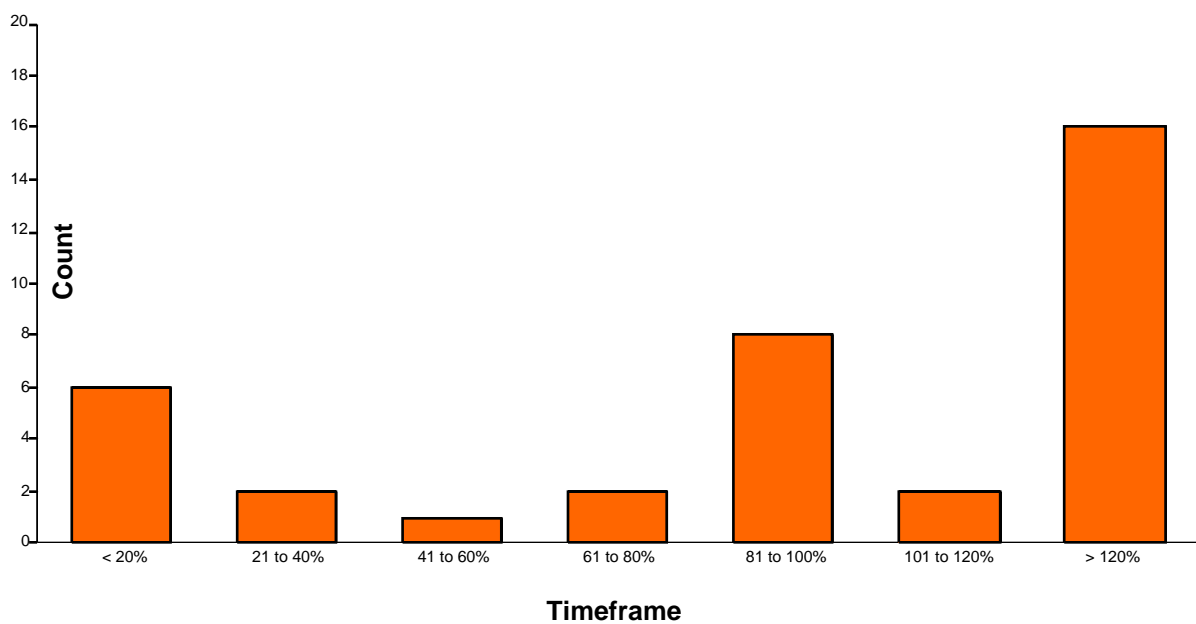
### 6 to 8 month applications

Total finalised: 48



### 9 to 12 month applications

Total finalised: 37





## Finalised agricultural product applications

For the period: 01 Jul 2008 to 30 Jun 2009

### 13 to 15 month applications

Total finalised: 12

