



REGISTRATION STATISTICS 2010/11

The following tables and graphs set out registration statistics for the financial year 2011/12 for the Pesticides Program.

Tables

The 25 application categories are aggregated into statutory* timeframe periods.

Preliminary assessment

Preliminary assessment is the correct legal term for what is more commonly known as 'screening'.

This table shows:

- applications in process from the previous year;
- applications received in 2011/12; and
- applications withdrawn or rejected during the screening process.

Outcome of application

This table shows the number of applications received for assessment and the number finalised during 2011/12.

Summary (Determination all applications)

This table shows a summary of all applications, at screening and evaluation, finalised during 2011/12. The table includes the average clock ON time (the time the APVMA has been evaluating the application) and the average elapsed time (the total time to finalise the application, i.e. time the APVMA evaluates the application, plus the time taken by the applicant to correct defects and supply the label for approval).

Graphs

The graphs are divided into timeframe periods for application categories. Each graph shows the number of applications that were finalised within 20% to 120% of the application statutory timeframe.

Note that if an application has been withdrawn during screening or is a modular application without a timeframe it will be counted in the 2 to 3 month application graph.

* The statutory timeframe for each application category is defined in Schedule 6 of the *Agricultural and Veterinary Chemicals Code Regulations 1995*.

Annual statistics for applications received and finalised

Financial year 2011/12

Pesticides Program

PRELIMINARY ASSESSMENT				
	In process at start of year	Apps received	Withdrawn	Rejected
Class of application				
Modular (modules to be assigned) or TBA		5	3	
2 to 3 month		1618	185	
5 month		185	34	
6 to 8 month		93		
9 to 12 month		1		
13 to 15 month		8	2	
TOTALS:	1228	1910	224	0

2 to 3 month = Cat 7, 8, 9, 12, 13, 14

Cat 10 can be 5-15 months, most commonly 6-8 months

5 month = Cat 5, 6, 10, 14

Cat 14 can be 2-14 months, most commonly 5-7 months

6 to 8 month = Cat 10, 11, 14

9 to 12 month = Cat 10, 14

13 to 15 month = Cat 1, 10

Withdrawn = treated as withdrawn by the APVMA, or voluntary withdrawal by the applicant

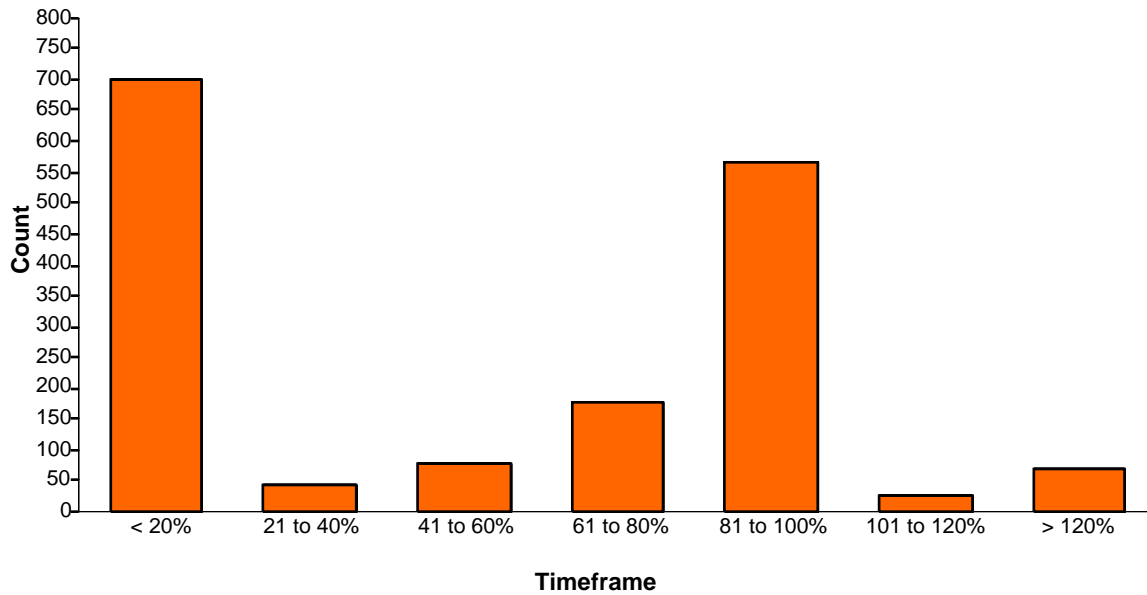
OUTCOME OF APPLICATION									
	Granted	In timeframe	% in timeframe	Refused	In timeframe	% in timeframe	Withdrawn	In timeframe	% in timeframe
Class of application									
Modular (modules to be assigned) or TBA	1	1	100%	-	-	-	-	-	-
2 to 3 month	1437	1356	94%	-	-	-	38	23	61%
5 month	218	143	66%	-	-	-	23	16	70%
6 to 8 month	74	41	55%	-	-	-	10	7	70%
9 to 12 month	55	29	53%	-	-	-	10	6	60%
13 to 15 month	17	11	65%	-	-	-	6	5	83%
TOTALS:	1802	1581	88%	0	0	-	87	57	66%

SUMMARY (Determination period)						
	TOTAL finalised	Number in timeframe	% in timeframe	Av. clock On (months)	Av. elapsed time (months)	In process at end of year
	1	1	100%	0.0	26.4	
	1475	1379	93%	1.9	4.4	
	241	159	66%	5.6	14.8	
	84	48	57%	7.5	16.0	
	65	35	54%	12.0	32.0	
	23	16	70%	18.0	42.0	
TOTALS:	1889	1638	86.7%			1028



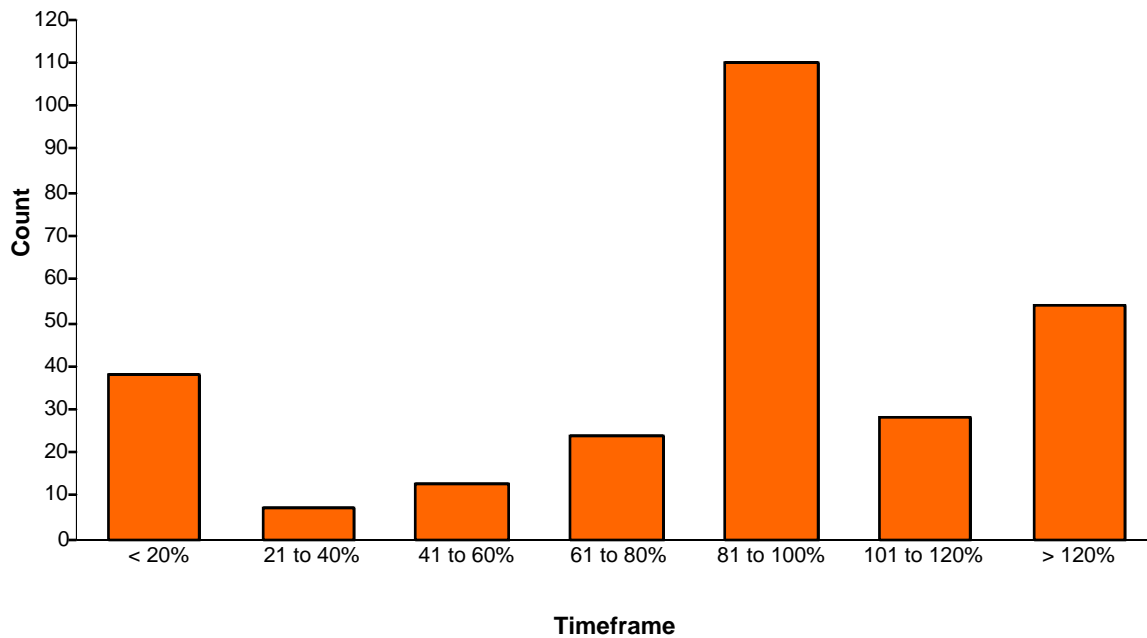
2 to 3 month applications

Total finalised: 1,662



5 month applications

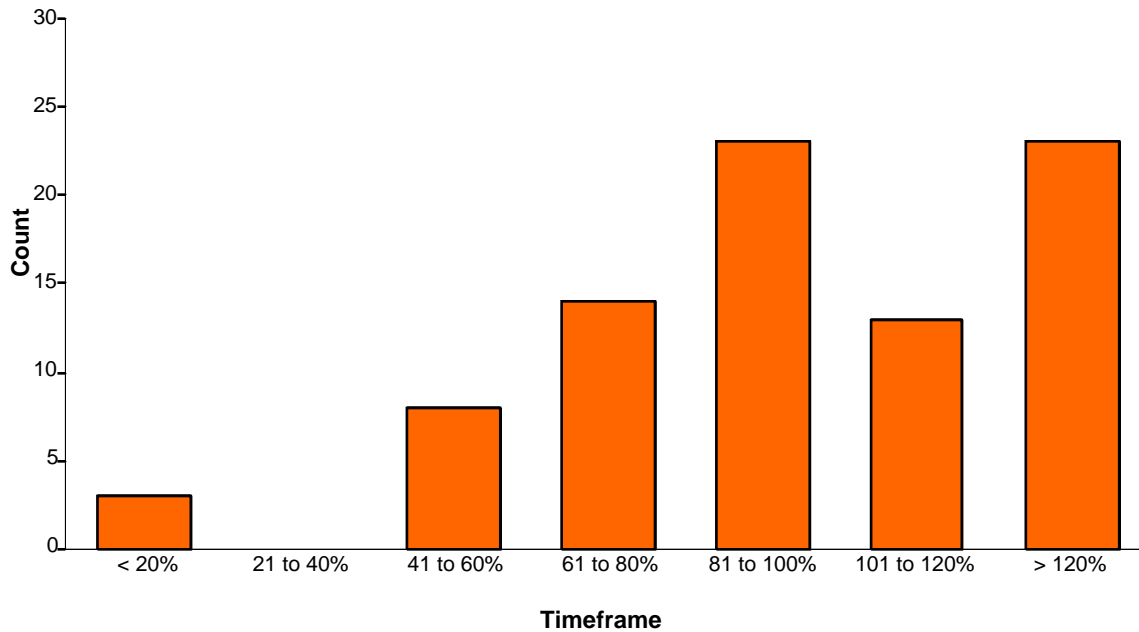
Total finalised: 274





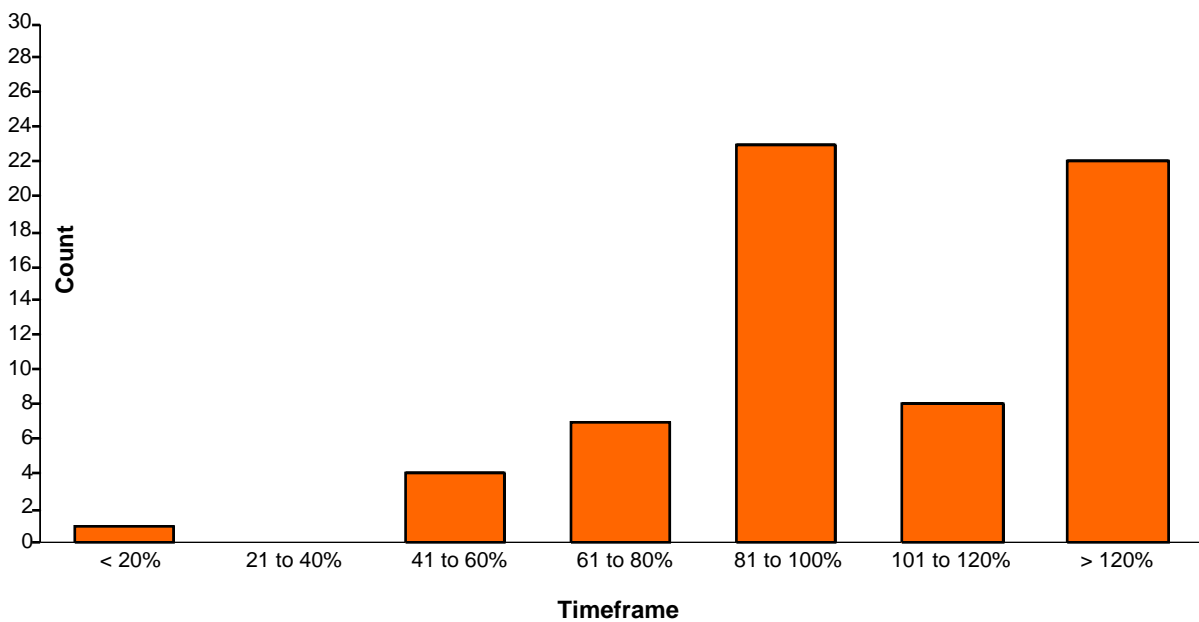
6 to 8 month applications

Total finalised: 84



9 to 12 month applications

Total finalised: 65





13 to 15 month applications

Total finalised: 25

