



REGISTRATION STATISTICS 2012/13

The following tables and graphs set out registration statistics for the financial year 2012/13 for the Pesticides Program.

Tables

The 25 application categories are aggregated into statutory* timeframe periods.

Preliminary assessment

Preliminary assessment is the correct legal term for what is more commonly known as 'screening'.

This table shows:

- applications in process from the previous year;
- applications received in 2012/13;
- applications preliminary assessed under s11A; and
- applications withdrawn or rejected during the screening process.

Outcome of application

This table shows the number of applications received for assessment and the number finalised during 2012/13.

Summary (Determination all applications)

This table shows a summary of all applications, at screening and evaluation, finalised during 2012/13. The table includes the average clock ON time (the time the APVMA has been evaluating the application) and the average elapsed time (the total time to finalise the application, i.e. time the APVMA evaluates the application, plus the time taken by the applicant to correct defects and supply the label for approval).

Graphs

The graphs are divided into timeframe periods for application categories. Each graph shows the number of applications that were finalised within 20% to 120% of the application statutory timeframe.

Note that if an application has been withdrawn during screening or is a modular application without a timeframe it will be counted in the 2 to 3 month application graph.

* The statutory timeframe for each application category is defined in Schedule 6 of the *Agricultural and Veterinary Chemicals Code Regulations 1995*.

Annual statistics for applications received and finalised

Financial year 2012/13

Pesticides Program

PRELIMINARY ASSESSMENT				
	In process at start of quarter	Apps received	Withdrawn	Rejected
Class of application				
Modular (modules to be assigned) or TBA		8	3	1
2 to 3 month		1759	153	
5 month		192	24	
6 to 8 month		94	2	
9 to 12 month			5	
13 to 15 month		9	2	
TOTALS:	1028	2062	189	1

2 to 3 month = Cat 7, 8, 9, 12, 13, 14

5 month = Cat 5, 6, 10, 14

6 to 8 month = Cat 10, 11, 14

9 to 12 month = Cat 10, 14

13 to 15 month = Cat 1, 10

Cat 10 can be 5-15 months, most commonly 6-8 months

Cat 14 can be 2-14 months, most commonly 5-7 months

Withdra

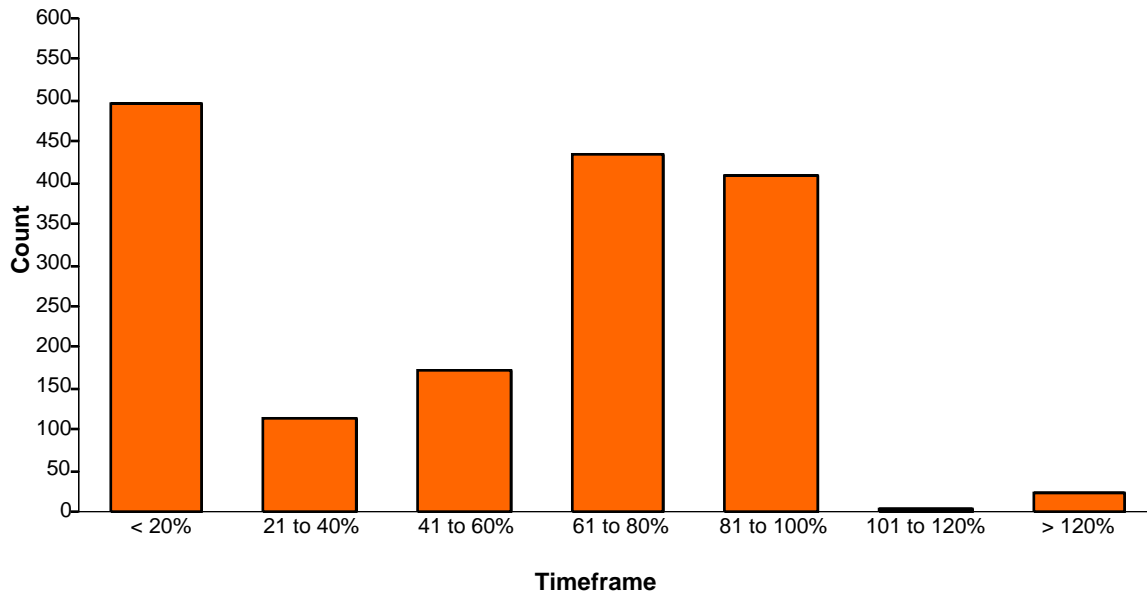
OUTCOME OF APPLICATION									
	Granted	In timeframe	% in timeframe	Refused	In timeframe	% in timeframe	Withdrawn	In timeframe	% in timeframe
Class of application									
Modular (modules to be assigned) or TBA	1	1	100%				-		-
2 to 3 month	1469	1447	99%	1	1	100%	22	19	86%
5 month	178	159	89%	1	1	100%	7	5	71%
6 to 8 month	83	68	82%				1	1	100%
9 to 12 month	78	55	71%	2	2	100%	4	3	75%
13 to 15 month	15	6	40%	1	1	100%	1	0	0%
TOTALS:	1824	1736	95%	5	5	100%	35	28	80%

SUMMARY (Determination period)						
	TOTAL finalised	Number in timeframe	% in timeframe	Av. clock On (months)	Av. elapsed time (months)	In process at end of quarter
	1	1	100%	0.0	42.0	
	1492	1467	98%	1.7	4.0	
	186	165	89%	4.6	11.2	
	84	69	82%	6.9	15.5	
	84	60	71%	10.5	25.0	
	17	7	41%	19.8	41.3	
TOTALS:	1864	1769	94.9%			1039



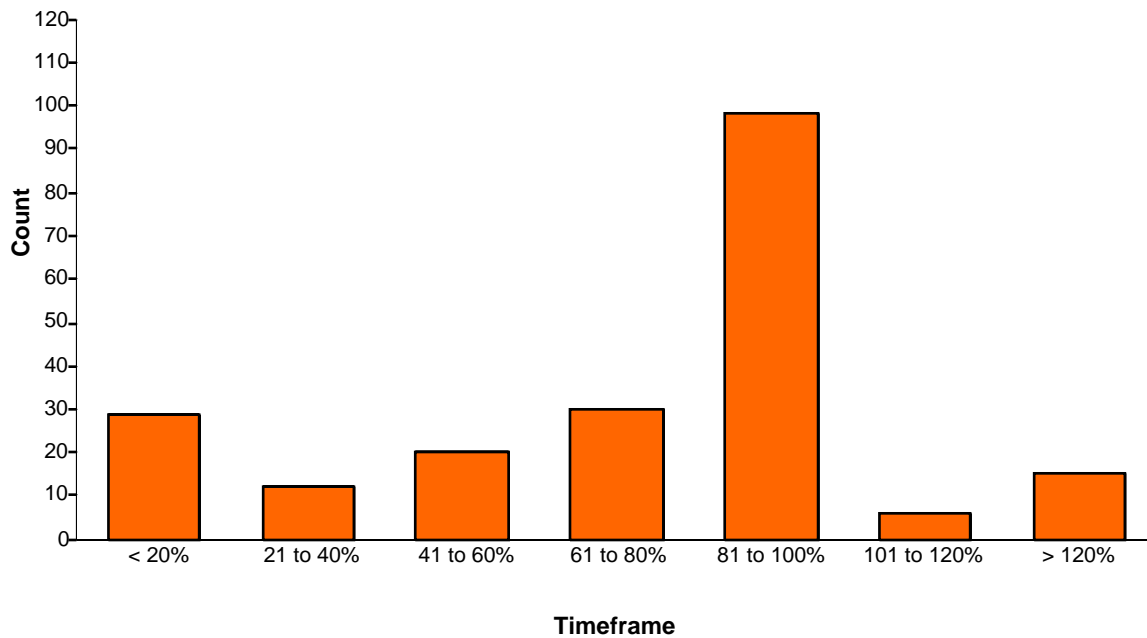
2 to 3 month applications

Total finalised: 1,650



5 month applications

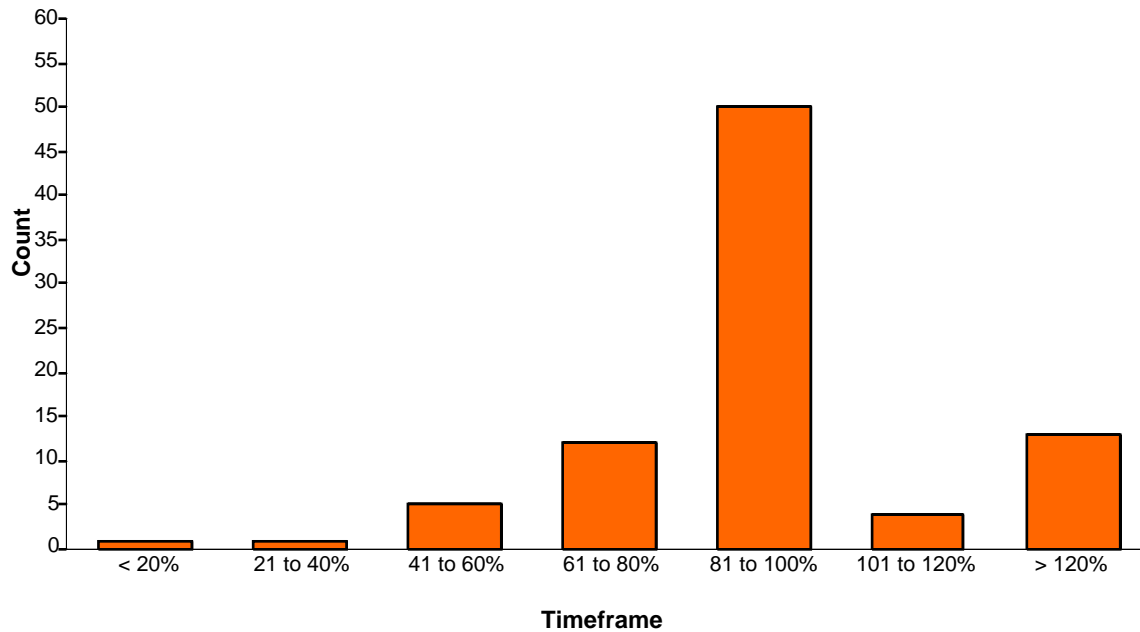
Total finalised: 210





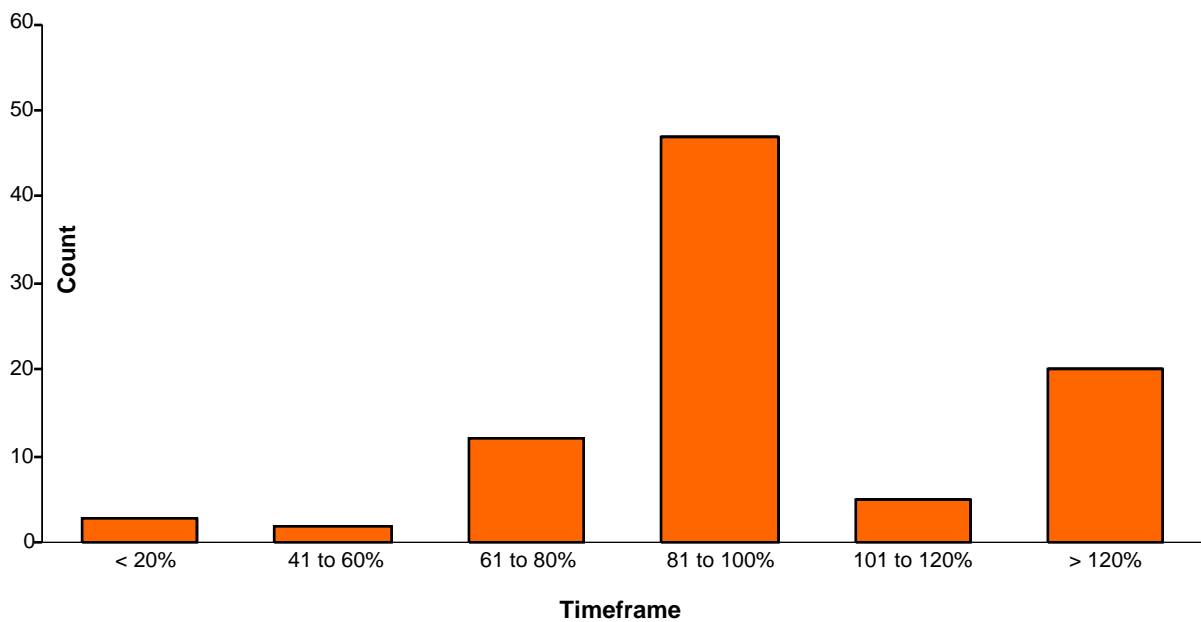
6 to 8 month applications

Total finalised: 86



9 to 12 month applications

Total finalised: 89





13 to 15 month applications

Total finalised: 19

