



REGISTRATION STATISTICS 2010/11

The following tables and graphs set out registration statistics for the financial year 2010/11 for the Veterinary Medicines Program.

Tables

The 25 application categories are aggregated into statutory* timeframe periods.

Preliminary assessment

Preliminary assessment is the correct legal term for what is more commonly known as 'screening'.

This table shows:

- applications in process from the previous year;
- applications received in 2010/11; and
- applications withdrawn or rejected during the screening process.

Outcome of application

This table shows the number of applications received for assessment and the number finalised during 2010/11.

Summary (Determination all applications)

This table shows a summary of all applications, at screening and evaluation, finalised during 2010/11. The table includes the average clock ON time (the time the APVMA has been evaluating the application) and the average elapsed time (the total time to finalise the application, i.e. time the APVMA evaluates the application, plus the time taken by the applicant to correct defects and supply the label for approval).

Graphs

The graphs are divided into timeframe periods for application categories. Each graph shows the number of applications that were finalised within 20% to 120% of the application statutory timeframe.

Note that if an application has been withdrawn during screening or is a modular application without a timeframe it will be counted in the 2 to 3 month application graph.

* The statutory timeframe for each application category is defined in Schedule 6 of the *Agricultural and Veterinary Chemicals Code Regulations 1995*.

Annual statistics for applications received and finalised

Financial year 2010/11

Veterinary Medicines Program

PRELIMINARY ASSESSMENT				
	In process at start of year	Apps received	Withdrawn	Rejected
Class of application				
Modular (modules to be assigned) or TBA		16	9	
2 to 3 month		914	107	
5 month		138	11	
6 to 8 month		41	1	
9 to 12 month				
13 to 15 month		3	1	
TOTALS:	858	1112	129	0

2 to 3 month = Cat 7, 8, 9, 12, 13, 14

Cat 10 can be 5-15 months, most commonly 6-8 months

5 month = Cat 5, 6, 10, 14, 17, 18

Cat 14 can be 2-14 months, most commonly 5-7 months

6 to 8 month = Cat 10, 11, 14, 16

9 to 12 month = Cat 10, 14, 15

13 to 15 month = Cat 2, 10

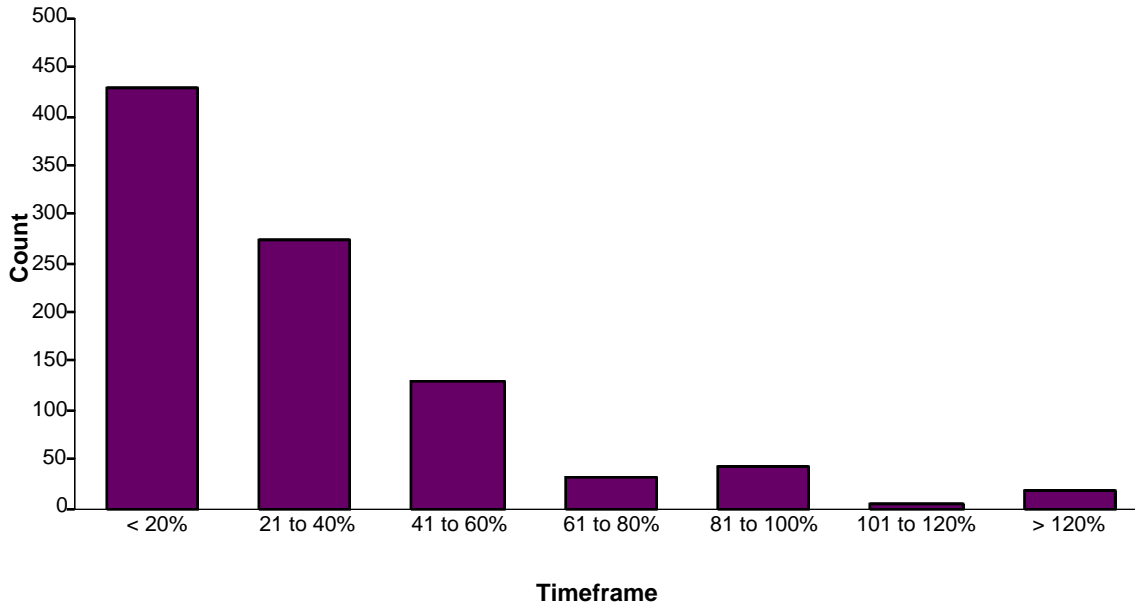
Withdrawn = treated as withdrawn by the APVMA, or voluntary withdrawal by the applicant

OUTCOME OF APPLICATION									
	Granted	In timeframe	% in timeframe	Refused	In timeframe	% in timeframe	Withdrawn	In timeframe	% in timeframe
Class of application									
Modular (modules to be assigned) or TBA	2	2	100%	-	-	-	-	-	-
2 to 3 month	792	774	98%	-	-	-	20	18	90%
5 month	166	140	84%	-	-	-	7	6	86%
6 to 8 month	55	34	62%	-	-	-	3	2	67%
9 to 12 month	23	15	65%	-	-	-	1	0	0%
13 to 15 month	6	4	67%	-	-	-	1	1	100%
TOTALS:	1044	969	93%	0	0	-	32	27	84%

SUMMARY (Determination period)						
	TOTAL finalised	Number in timeframe	% in timeframe	Av. clock On (months)	Av. elapsed time (months)	In process at end of year
	2	2	100%	0.9	3.5	
	812	792	98%	0.9	5.2	
	173	146	84%	4.9	14.7	
	58	36	62%	9.5	24.0	
	24	15	63%	10.1	27.0	
	7	5	71%	15.0	41.5	
TOTALS:	1076	996	92.6%			768

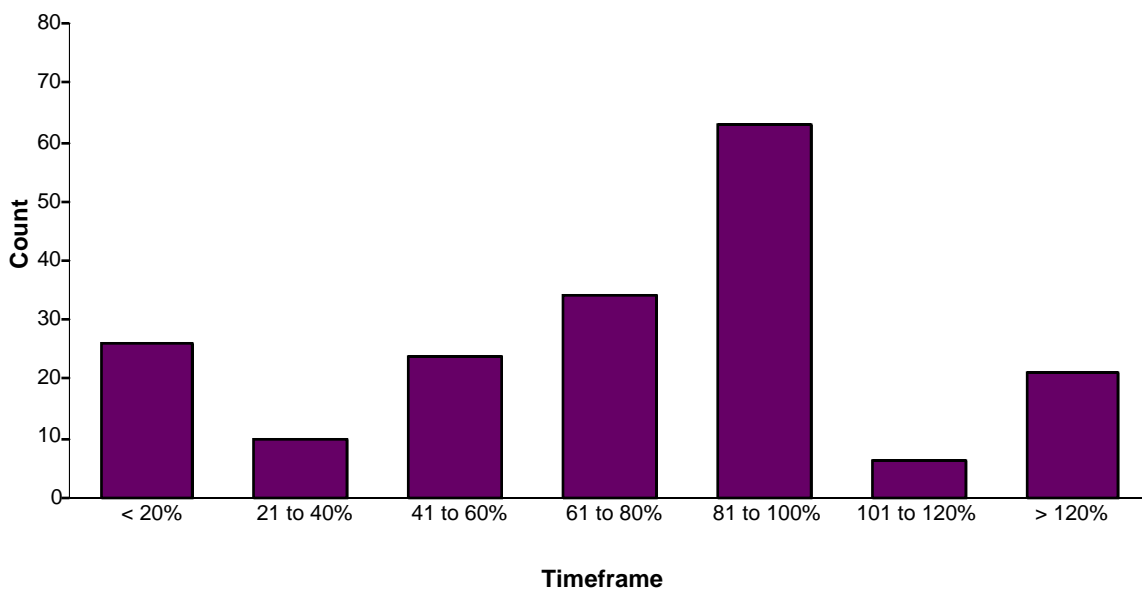
2 to 3 month applications

Total finalised: 930



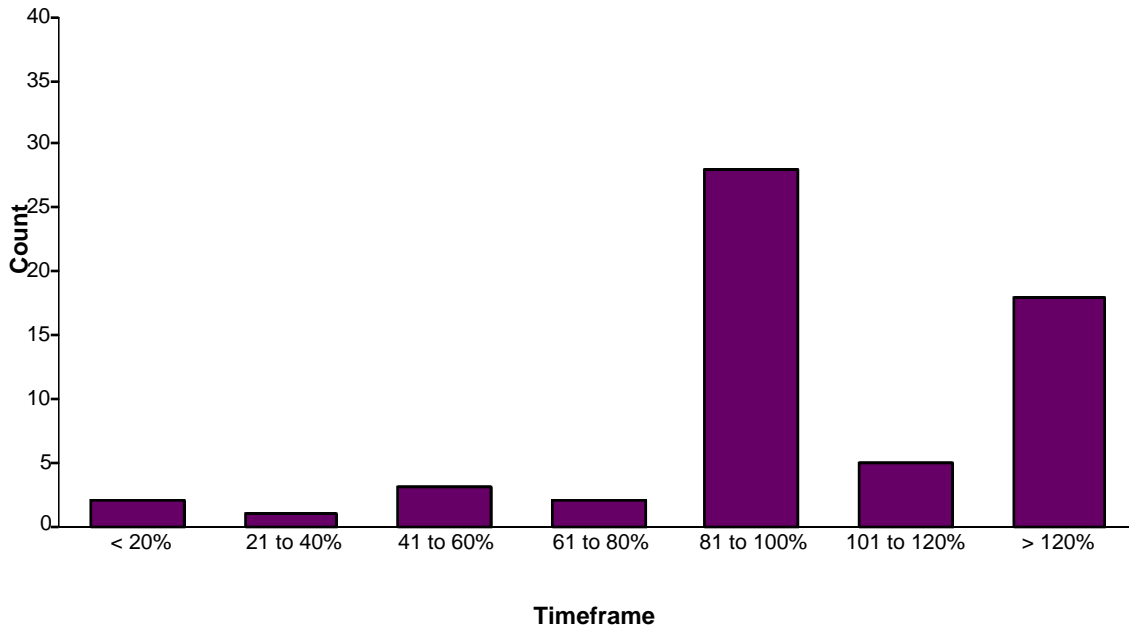
5 month applications

Total finalised: 184



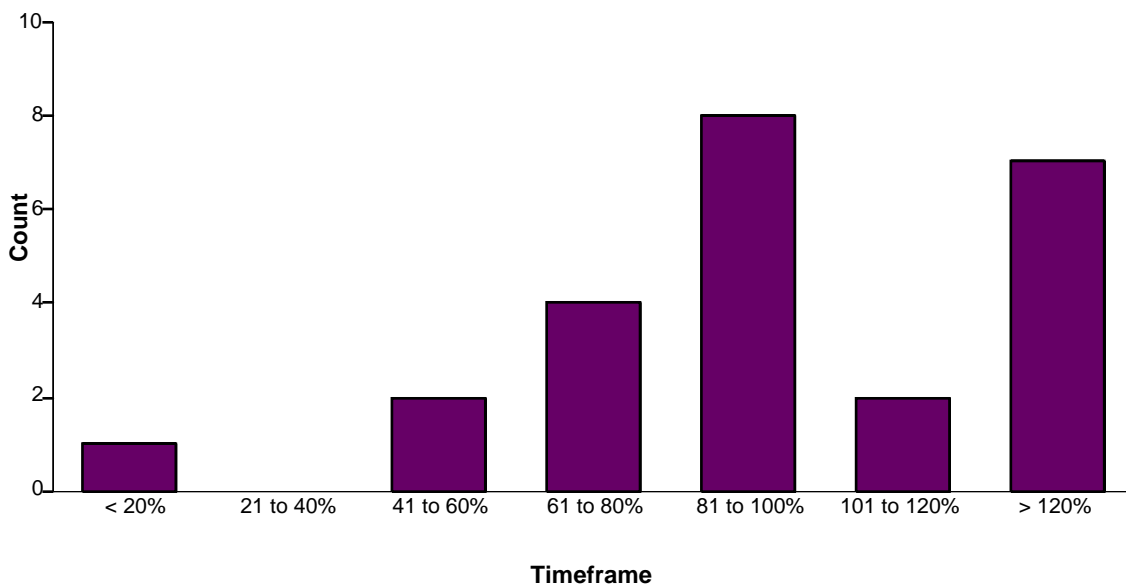
6 to 8 month applications

Total finalised: 59



9 to 12 month applications

Total finalised: 24



13 to 15 month applications

Total finalised: 8

