



## **REGISTRATION STATISTICS 2012/13**

The following tables and graphs set out registration statistics for the financial year 2012/13 for the Veterinary Medicines Program.

### **Tables**

The 25 application categories are aggregated into statutory\* timeframe periods.

#### *Preliminary assessment*

Preliminary assessment is the correct legal term for what is more commonly known as 'screening'.

This table shows:

- applications in process from the previous year;
- applications received in 2012/13;
- applications preliminary assessed under s11A; and
- applications withdrawn or rejected during the screening process.

#### *Outcome of application*

This table shows the number of applications received for assessment and the number finalised during 2012/13.

#### *Summary (Determination all applications)*

This table shows a summary of all applications, at screening and evaluation, finalised during 2012/13. The table includes the average clock ON time (the time the APVMA has been evaluating the application) and the average elapsed time (the total time to finalise the application, i.e. time the APVMA evaluates the application, plus the time taken by the applicant to correct defects and supply the label for approval).

### **Graphs**

The graphs are divided into timeframe periods for application categories. Each graph shows the number of applications that were finalised within 20% to 120% of the application statutory timeframe.

Note that if an application has been withdrawn during screening or is a modular application without a timeframe it will be counted in the 2 to 3 month application graph.

\* The statutory timeframe for each application category is defined in Schedule 6 of the *Agricultural and Veterinary Chemicals Code Regulations 1995*.

# Annual statistics for applications received and finalised

Financial year 2012/13

## Veterinary Medicines Program

PRELIMINARY ASSESSMENT				
	In process at start of quarter	Apps received	Withdrawn	Rejected
<b>Class of application</b>				
Modular (modules to be assigned) or TBA		1	3	
2 to 3 month		719	100	2
5 month		155	7	4
6 to 8 month		36	2	
9 to 12 month		1	1	
13 to 15 month		1	2	
<b>TOTALS:</b>	<b>811</b>	<b>913</b>	<b>115</b>	<b>6</b>

2 to 3 month = Cat 7, 8, 9, 12, 13, 14

5 month = Cat 5, 6, 10, 14

6 to 8 month = Cat 10, 11, 14

9 to 12 month = Cat 10, 14

13 to 15 month = Cat 1, 10

Cat 10 can be 5-15 months, most commonly 6-8 months

Cat 14 can be 2-14 months, most commonly 5-7 months

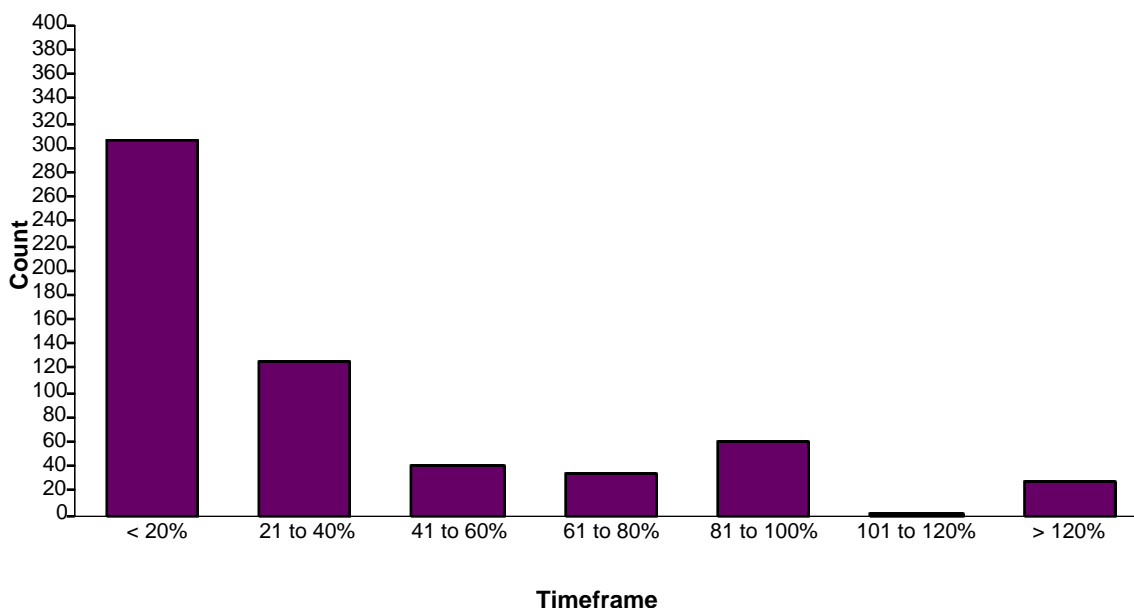
Withdra

OUTCOME OF APPLICATION									
	Granted	In timeframe	% in timeframe	Refused	In timeframe	% in timeframe	Withdrawn	In timeframe	% in timeframe
<b>Class of application</b>									
Modular (modules to be assigned) or TBA				-			-		-
2 to 3 month	485	458	94%				6	4	67%
5 month	157	138	88%	1	1	100%	12	11	92%
6 to 8 month	35	23	66%	3	1	33%	6	5	83%
9 to 12 month	34	25	74%	6	4	67%	11	8	73%
13 to 15 month	19	17	89%	2	1	50%	5	1	20%
<b>TOTALS:</b>	<b>730</b>	<b>661</b>	<b>91%</b>	<b>12</b>	<b>7</b>	<b>58%</b>	<b>40</b>	<b>29</b>	<b>73%</b>

SUMMARY (Determination period)						
	TOTAL finalised	Number in timeframe	% in timeframe	Av. clock On (months)	Av. elapsed time (months)	In process at end of quarter
	0	0	-			
	491	462	94%	1.8	6.6	
	170	150	88%	5.0	11.0	
	44	29	66%	9.4	25.0	
	51	37	73%	12.7	31.6	
	26	19	73%	17.7	35.3	
<b>TOTALS:</b>	<b>782</b>	<b>697</b>	<b>89.1%</b>			<b>828</b>

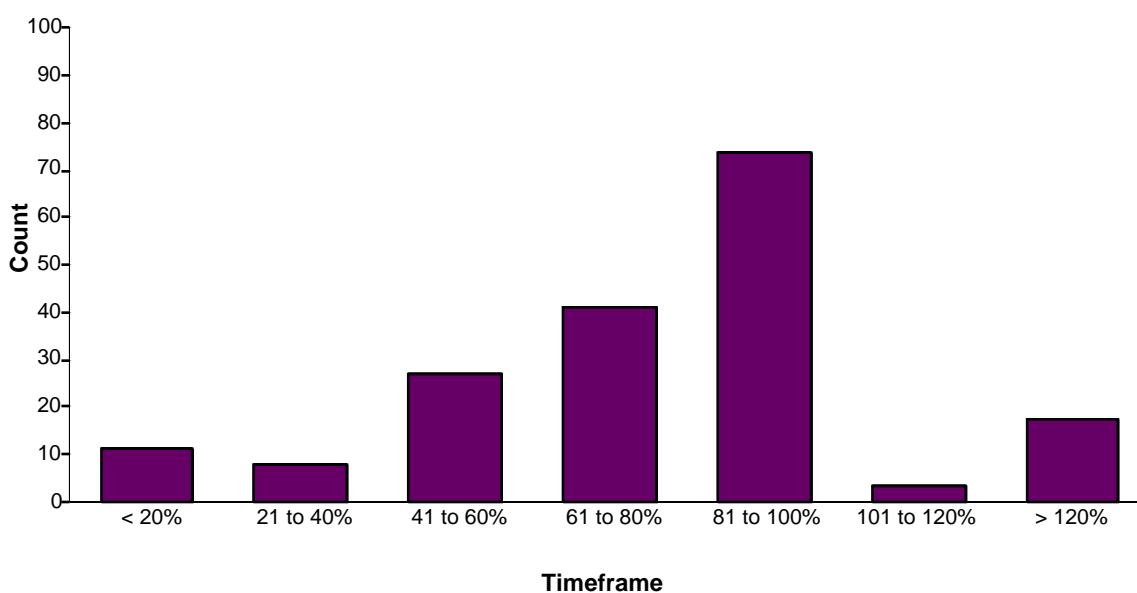
**2 to 3 month applications**

**Total finalised: 596**



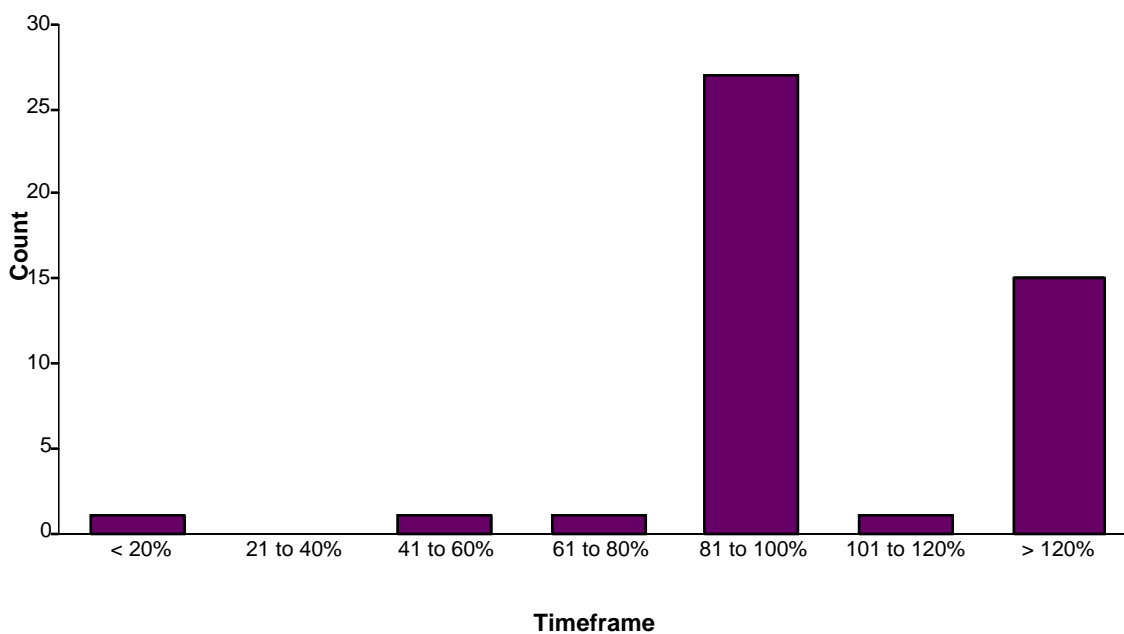
**5 month applications**

**Total finalised: 181**



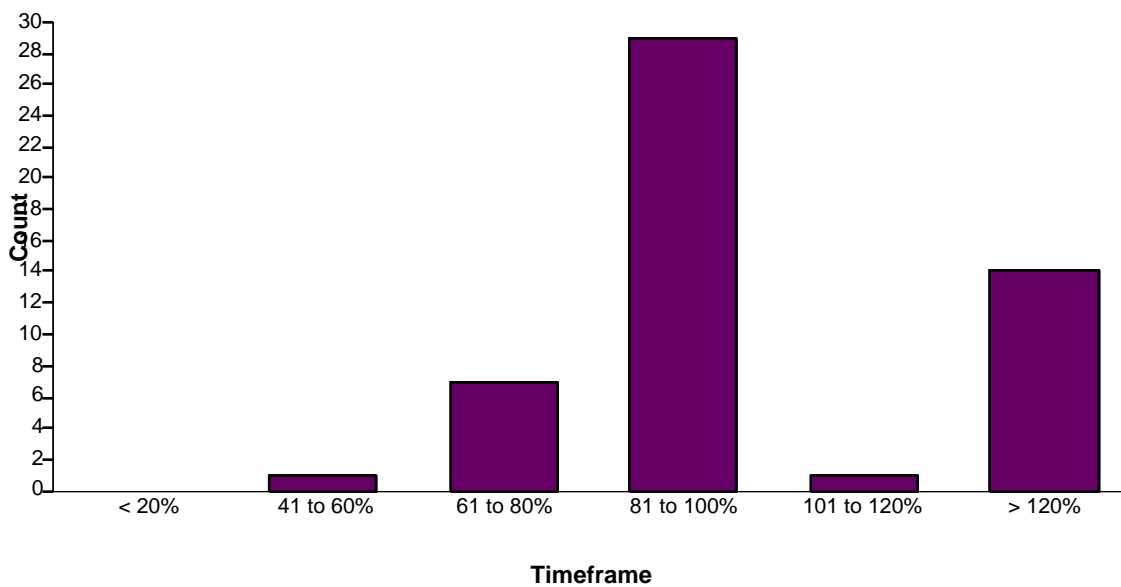
**6 to 8 month applications**

**Total finalised: 46**



**9 to 12 month applications**

**Total finalised: 52**



**13 to 15 month applications**

**Total finalised: 28**

